



# M.V. "THOR SPIRIT"



**Owner :**  
Thor Spirit Shipping Co.,Ltd.  
**Manager:**  
Thoresen & Co., (Bangkok) Ltd.

**Built :**  
1986, Spain.  
**Classification :**  
Lloyd's Register

**Flag :**  
Thailand

**Call Sign :** HSBS 2  
**Inmarsat C :** 456713410  
**E-mail :** thor.spirit@hmcmail.com  
**Mini-M Phone :** ++762743745  
**Dimensions :** LOA 148.70 m.  
LBP 137.75 m.  
Breadth 22.00 m.  
**Tonnage :** GRT 10,572  
NRT 6,571  
**SDWT :** 16,247.90 / 9.408 m.  
**TDWT :** 16,764.40 / 9.604 m.  
**WDWT :** 15,734.90 / 9.212 m.

**Suez Gr/Nt :** 11,023.10 / 8,856.80  
**Panama Gr/Nt :** 11,618.62 / 9,089.72  
**Speed / Consumption :**  
12.0 knots on 18 mts. IFO (180 CST)  
2.0 mts. MDO daily  
**Hatch Dimensions :** 5 HO / 5 HA  
HA. 1 : (12.75 x 8.05 m.)  
HA. 2 : (19.50 x 13.10 m.)  
HA. 3 : (12.75 x 13.10 m.)  
HA. 4 : (12.75 x 13.10 m.)  
HA. 5 : (12.75 x 13.10 m.)  
**Cargo Gears :** 4 x 12.5 ts. Cranes

**Capacities :-**

Hold	Bulk Carrier Grain (Cu.Ft.)	Tweendecker	
		Grain (Cu.Ft.)	Bale (Cu.Ft.)
1. - Hold - Twdk	89,682	43,911 45,772	38,486 40,881
2. - Hold - Twdk	203,079	122,165 105,245	121,145 89,700
3. - Hold - Twdk	143,884	97,187 64,376	86,426 61,890
4. - Hold - Twdk	143,972	97,275 64,376	86,543 61,706
5. - Hold - Twdk	145,809	93,450 71,217	82,181 65,294
<b>TOTAL</b>	<b>726,426</b>	<b>804,974</b>	<b>734,252</b>

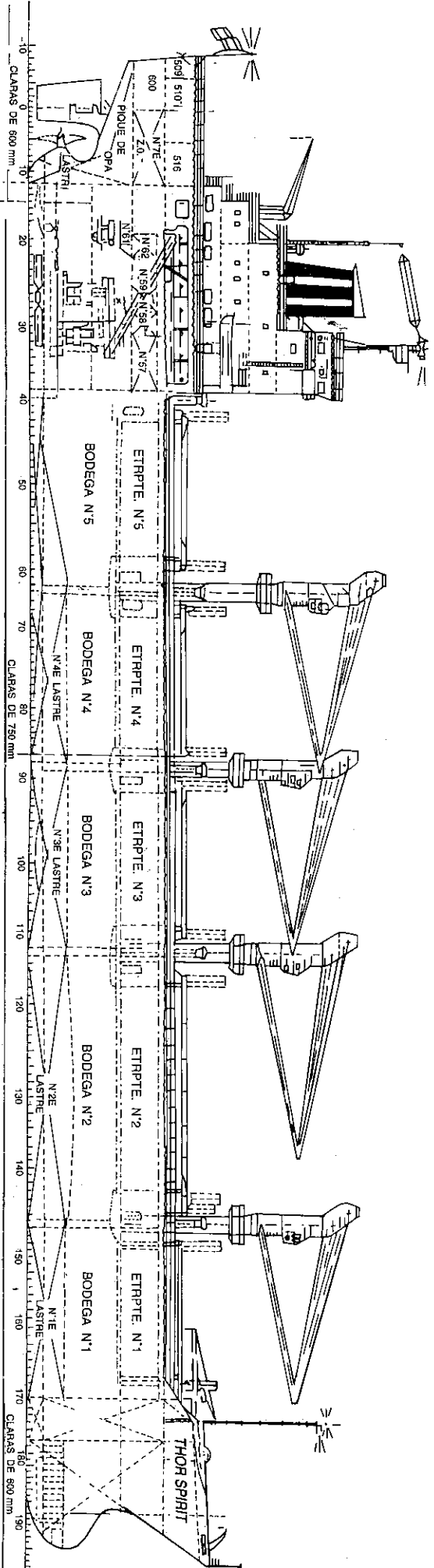
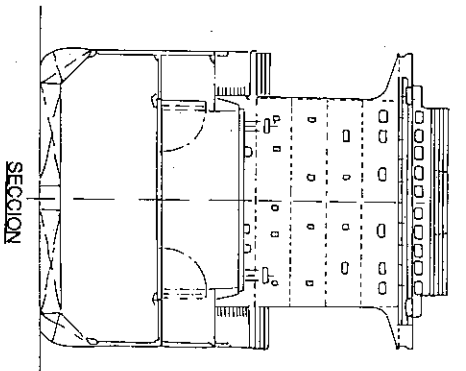
**Machinery :**  
Main Engine - B & W 7L45 GB, 7420 BHP.  
**Special Fitting :**  
CO<sub>2</sub> fitted in all cargo holds & eng. room  
**Ventilation :**  
Electric vents with capacity  
about 14,000 - 32,500 Cb.M./Hrs.

**Deadweight Scale**

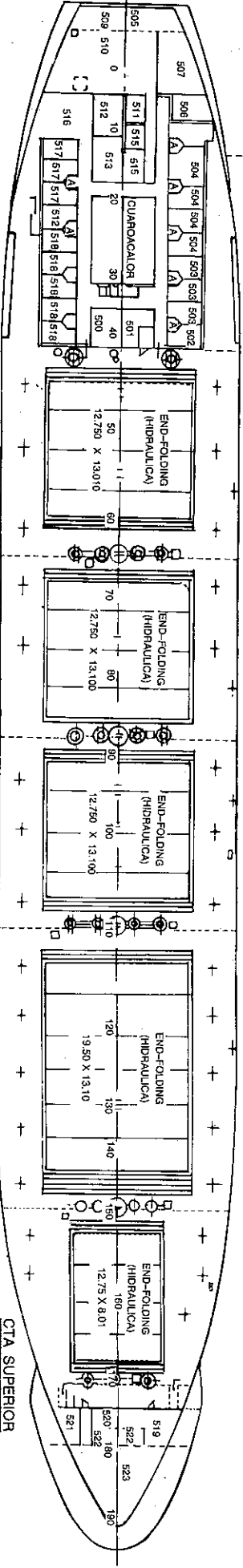
Draft (m.)	SDWT	Draft (ft.)
7.00	10,198.8	23-00
7.50	11,412.0	24-07
8.00	12,645.0	26-03
8.50	13,902.3	27-11
9.00	15,184.0	29-06

*\*The details in this brochure are for guidance only and no warranty or representation is given, nor liability accepted, by owners as to the accuracy of such details.\**

# M.V. "THOR SPIRIT"



PERFIL



CITA SUPERIOR